

TRANSFORMER CHANGE-OUTS

TURNKEY SOLUTIONS INCLUDE:

- GSU, AUX, ESS, GCB & CT Installation & Change-Outs
- PT/SA/VT Cubicle Installation & Change-Outs
- 24/7 Emergency Response
- Bus Duct Demolition, Removal & Re-Installation
- Replacement Termination Enclosures
- Replacement Adapter Bars & Flex Links
- Replacement Isolation GP03 / G10 & Hardware
- Contingency Planning
- Transformer Replacement
- Transformer Services
- Fabrication
- 3D Modeling

TRANSFORMER CHANGE-OUTS

Rely on the bus duct experts for your
transformer change-out projects.



FOR MORE DETAILS

SCAN ME



877-297-0616 | ElectricalBuilders.com



TRANSFORMER CHANGE-OUTS

Rely on the bus duct experts for your transformer change-out projects.

TRANSFORMER CHANGE-OUT BEST PRACTICES

Do you have a transformer change-out project coming up? Whether it is a planned “like for like” transformer or new design, your electrical bus duct system will be impacted. A key aspect of the overall project success will depend on the quality, capabilities, and efficiency of your electrical bus duct contractor. A variance in elevation, flange layout, orientation of contact surfaces, and phase spacing, are just a few obstacles that could easily cause major delays if not foreseen and properly planned for; prior to beginning onsite activities.

No matter how simple or extensive your transformer change-out project is; whether it is planned far in advance or is an emergency, we will put over 50 years of experience to work for you and give you peace of mind. In order to ensure successful results, we have put together a few best practice tips to consider as you are planning your project.

1) CONTRACTOR SELECTION / QUALIFICATION PROCESS

With over 200 years of combined technical expertise dedicated exclusively to the power generation industry, you can rest assured that EBI has the qualifications needed to complete your change-out project as efficiently and safely as possible. We have an exceptional lessons learned database, a industry leading training program that documents our best practices, an internal quality audit program, and a valuable customer feedback program. EBI has gone even further to become the only bus duct services contractor to obtain and maintain ISO 9001 quality certification.

2) PRE-OUTAGE PLANNING

Successful clients request EBI to join their pre-outage planning teams, relying on our extensive bus duct technical expertise to work closely with the transformer OEM to help guide the project to an efficient, safe, and cost-effective solution with unparalleled quality and customer service. EBI offers a variety of optional online, non-invasive Isolated Phase Bus (IPB) system diagnostic survey solutions, which may assist outage planning activities. EBI

delivers a comprehensive plan to not only perform standard bus services, but also fabrication, modification and repair solutions if required.

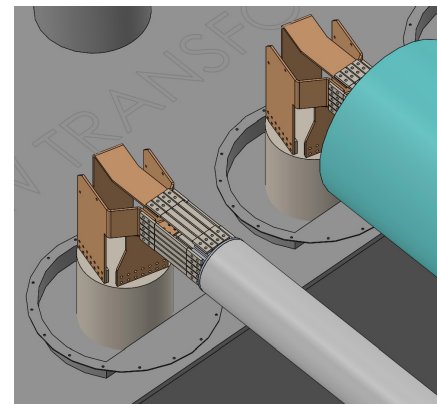
In addition, EBI is constantly seeking new technologies and investing in innovations that improve productivity and efficiency for ourselves and for our clients. One new initiative that our team has implemented is 3D modeling. Our team of designers is able to provide clients with a 3D design visualization of the project; streamlining design options and eliminating unforeseen issues that can arise onsite.

3) COMMUNICATIONS

Clear communication and collaboration is essential, especially on projects that involve multiple contractors. EBI works closely with our clients and engineers to ensure the lines of communication are open and the project is completed safely, efficiently, on time, and within budget.

4) REPLACEMENT ISOLATION HARDWARE

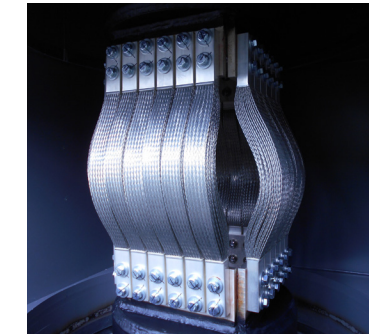
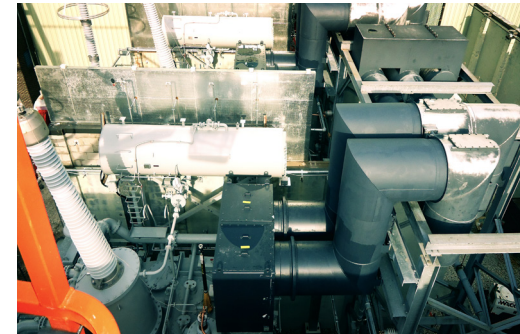
When systems fail that do not have a redundant backup, exact OEM replacement parts can be impossible to locate in a timely manner. EBI has a proven history of providing exemplary



turn-around times that meet and often exceed our clients' repair needs. EBI's in-house and mobile fabrication capabilities along with our network of certified manufacturing alliances allows us to shorten lead times and deliver unprecedented results.

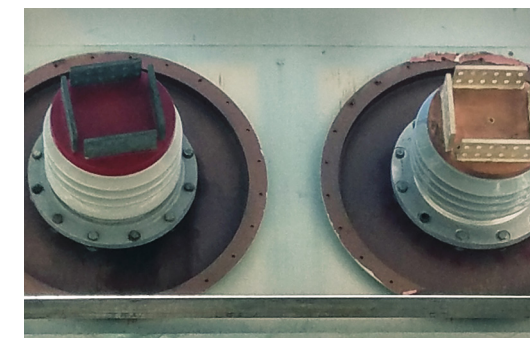
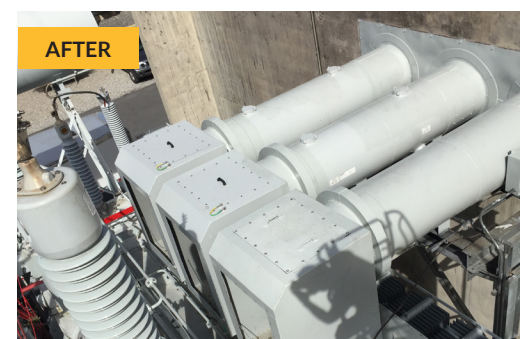
5) CONTINGENCY PLAN IN PLACE

EBI's state-of-the-art mobile R3 Contingency Unit is an all-in-one, onsite service and fabrication vehicle. Whether you need to repair, or to completely replace your electrical bus duct system, our R3 Unit is fully equipped to handle all of your bus duct repair and fabrication needs.



6) SPARE PARTS

As aging and obsolete equipment becomes more prevalent, you need a contractor that is knowledgeable in all current and obsolete OEM designs and equip to fabricate spare parts as needed. EBI's fabrication capabilities are second to none. There is virtually no bus system component that cannot be replaced.



7) FME PROCEDURE

At EBI we are constantly developing processes and procedures to make our job sites safer. That is why EBI developed new FME covers that feature durable Teflon material designed to increase safety and quality of projects involving IPB components. Investing in the research and development to improve the design of FME covers is just one example that demonstrates EBI's commitment to continuously advancing quality and safety standards in everything we do.

Contact EBI for your upcoming project needs and experience the EBI difference!

info@electricalbuilders.com
877-297-0616