



WHO WE ARE

Since 1974, Electrical Builders, Ind. (EBI) has been a trusted leader in specialized electrical, welding, and construction services for the medium and high-voltage power generation industry.

Our clients include utilities, substations, power plants, electrical bus duct OEMs, transformer manufactures, industrial/high-tech firms, and EPCs across North America and beyond.





KEY EXPERTISE

- ELECTRICAL BUS DUCT SYSTEMS ✓
(IPB, NON-SEG, SEG, CABLE)
- TRANSFORMER CHANGE-OUTS ✓
- SMR FIT UP SUPPORT ✓
- EPU EXPERTISE ✓
- 24/7/365 EMERGENCY SERVICES ✓
- REPAIR & CUSTOM FABRICATION ✓
- REPLACEMENT PARTS & HARDWARE ✓
- CONTINGENCY PLAN DEVELOPMENT ✓
- SPECIALTY ALUMINUM WELDING ✓
- IN-FIELD SILVER PLATING ✓
- REFURBISHMENT & ASSET LIFE EXTENSION ✓
- SOLUTIONS TO SUPPORT LICENSE RENEWAL
- DATA CENTER SUPPORT ✓
- PROFESSIONAL SERVICES ✓

With over five decades of industry experience, EBI is dedicated to optimizing and extending the life of your system critical power generation components. Specializing in metal enclosed electrical bus duct systems and connected components, we offer high-quality, turnkey solutions that enhance your plant's performance, safety, and efficiency.

Whether supporting current designs or older, obsolete systems, we provide OEM-independent guidance tailored to your needs, delivering peace of mind every step of the way.

Our comprehensive, turnkey services—including bus duct maintenance, repair, aftermarket enhancements, custom fabrication, and transformer change-out solutions are designed to deliver cost-effective life extension while improving overall safety and performance. Regular maintenance of electrical bus systems isn't just a best practice; it's an essential strategy for preventing forced outages, minimizing unplanned downtime, and safeguarding your personnel.

As your long-term partner, we are committed to supporting your mission of asset reliability and plant safety, investing early in project discussions to fully understand your goals. Our highly skilled technicians, drawing on extensive industry expertise, work closely with you to optimize your existing infrastructure and extend the life of your critical components.

Our commitment to getting it right the first time is backed by a track record of zero missed deadlines and zero warranty claims—an industry distinction. With EBI by your side, you can be confident that your plant's critical assets are protected and optimized for the future.

YOUR POWER IS OUR PRIORITY.

We're here to help you achieve lasting reliability, sustainability, and success—every step of the way.



**UNPLANNED
OUTAGES
ARE ON
THE RISE**

**CHOOSING
A REPUTABLE
CONTRACTOR
DETERMINES
WHEN YOU GET
BACK ONLINE**

**IDENTIFYING THE RIGHT
PARTNER TO ASSESS,
PROACTIVELY MONITOR, REPAIR,
AND SERVICE YOUR EQUIPMENT,
IS CRITICAL TO RELIABILITY AND
OPERATIONAL SUCCESS.**



ISOLATED PHASE BUS DUCT

TURNKEY SOLUTIONS INCLUDE:

- Fleet System Assessment & Planning
- Installation & Replacement
- Repairs & Refurbishment
- Rebuild & Fabrication (any OEM)
- Retrofits & Modifications
- Transformer Change-Outs
- Offline Bus Duct Maintenance & Inspection
- Cryogenic Cleaning
- Offline Robotic Video & Borescope Inspection
- Online Continuous Monitoring Solutions
- Noninvasive System Diagnostics & Troubleshooting
- Aftermarket System Enhancements
- Dry Air Systems
- & Much More



DO YOU KNOW WHAT'S HIDING IN YOUR IPB?

**INDUSTRY BEST PRACTICES
RECOMMEND
MAINTENANCE
AT A MINIMUM OF
EVERY 18 MONTHS.**

BEFORE



AFTER



CRYOGENIC CLEANING

EBI was the first isolated phase bus duct services contractor to develop and introduce environmentally friendly cryogenic cleaning for internal IPB components. This process cleans more than just the insulators; it thoroughly cleans inside the entire length of the bus duct system, where many issues hide. Cryogenic cleaning removes dirt, debris and contaminants without leaving a residue or damaging equipment.



NON-SEG BUS DUCT

TURNKEY SOLUTIONS
INCLUDE:

- Fleet System Assessment & Planning
- Installation & Replacement
- Repairs & Refurbishment
- Rebuild & Fabrication (any OEM)
- Retrofits & Modifications
- Transformer Change-Outs
- Offline Bus Duct Inspection & Maintenance
- Online Continuous Monitoring Solutions
- Noninvasive System Diagnostics & Troubleshooting
- Aftermarket System Enhancements
- Heaters





CABLE BUS DUCT

TURNKEY SOLUTIONS
INCLUDE:

- Installation & Replacement
- Cable Tray Installation & Modification
- Testing & Terminating
- Support Steel Installation & Modification
- Repair & Troubleshooting
- Project Management
- FE/Planners
- 3D Modeling





TRANSFORMER CHANGE-OUTS

TURNKEY SOLUTIONS INCLUDE:

- GSU, AUX, ESS, GCB & CT Installation & Change-Outs
- PT/SA/VT Cubicle Installation & Change-Outs
- 24/7 Emergency Response
- Bus Duct Demolition, Removal & Re-Installation
- Replacement Termination Enclosures
- Replacement Adapter Bars & Flex Links
- Replacement Isolation GP03 / G10 & Hardware
- Contingency Planning
- Transformer Replacement
- Transformer Services
- Testing
- Fabrication
- 3D Modeling



R3 MOBILE FABRICATION UNIT

EBI's R3 Mobile Fabrication Unit is a game-changing 53-foot, self-powered, all-in-one solution designed to bring expert machining and tooling directly to your site. This mobile powerhouse is fully equipped to fabricate, refurbish, and repair your isophase, segregated, and non-segregated bus duct systems and related components, right in the field. Minimize downtime and eliminate the need for offsite repairs – the R3 delivers fast, reliable, onsite solutions that keep your operations running at peak performance.



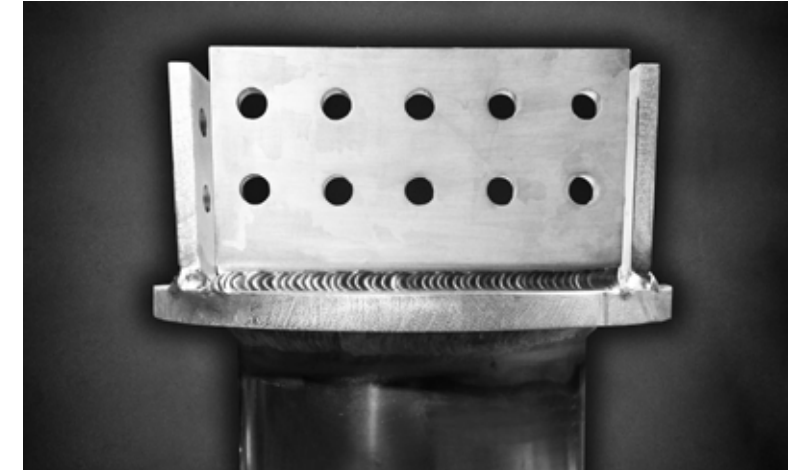
877-297-0616
urgent@electricalbuilders.com

**24/7/365
EMERGENCY
SERVICES**

CUSTOM FABRICATION

TURNKEY SOLUTIONS
INCLUDE:

- IPB Enclosure & Conductor Parts
- Design & Reverse Engineering/Fabrication
- Terminations (Flexible Braided Assemblies & Laminated Flexes)
- Bellows (Rubber or Aluminum)
- IPB Enclosure Expansion Joints
- Welded Conductor Shunt & Expansion Assemblies
- Wall & Ancillary Equipment Bushing Seal-Off Replacements
- Proprietary Welded Inspection Windows
- Bus Insulator Supports
- Silver Plated Conductor Adapters
- Bonding Bars
- 3D Modeling Capabilities

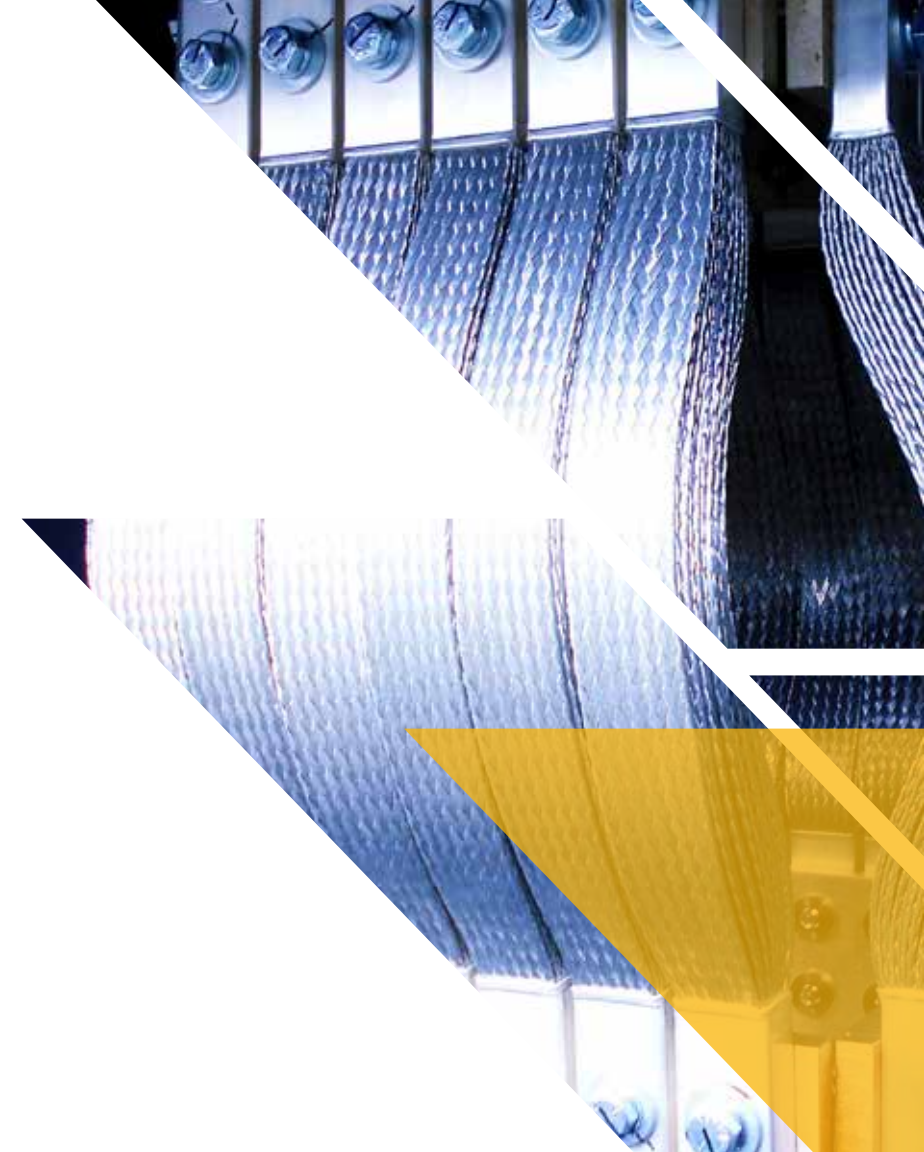




REPLACEMENT PARTS & HARDWARE

TURNKEY SOLUTIONS
INCLUDE:

- Gen & GSU LV Bushing/Neutral Boxes & Isolation
- Generator (GSU Transformer)
- LB Bushing Cabinets
- Gasket Material
- Adapter Plates
- Shorting Plate Assemblies
- Obsolete Parts (Bushings, Insulators, etc.)
- Insulators & Support Assemblies
- Refurbishment of Existing Parts
- Replacement Isolation
- Braided Flex Links & Hardware
- GPO3 / G10 & Hardware
- & More

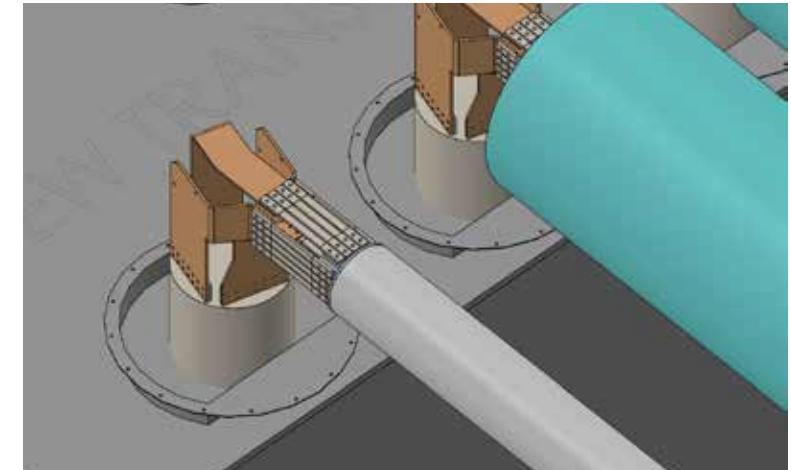
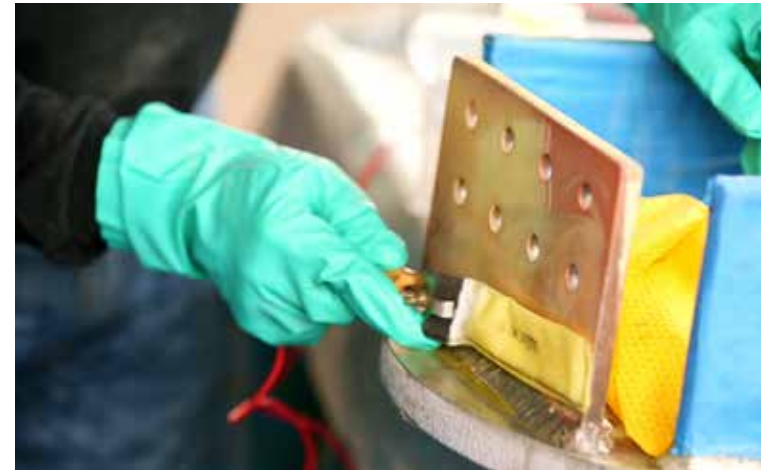




OTHER SERVICES

TURNKEY SOLUTIONS INCLUDE:

- Specialty Welding (IPB, Copper, Aluminum, Stainless, Carbon Steel, etc.)
- Consulting, Design, 3D Modeling & Project Planning
- Onsite Silver Plating
- Gas Insulated Bus (GIB)
- Offline Robotic Video & Borescope Inspection
- Testing (Thermal Imaging, AC/DC Hi-Pot, Online Continuous Monitoring, Noninvasive System Diagnostics, Megger, Tan Delta, DLRO, FLF, Gen CT, etc.)
- Electrical General Contractor
- Data Center Support
- Substation Mobile Welding





WHAT OUR CLIENTS HAVE TO SAY...

“Currently, these two stations are the top producing plants in the fleet in regard to megawatts as well as reliability. The work we’ve done with EBI over the last two years has played a huge part in that. Extremely satisfied with the crew, performance, and the company as a whole.”

Tim L. ~ Senior Generation Equipment Specialist

Find more testimonials and case studies on our website at: www.ElectricalBuilders.com

YOUR POWER IS OUR PRIORITY

Perfecting your assets is what we do.



Electrical Builders, Ind.
877-297-0616 | ElectricalBuilders.com

